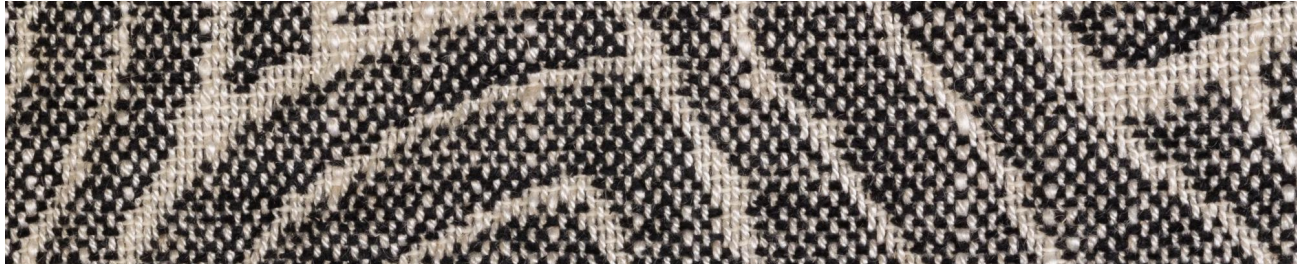


TECHNICAL FABRIC DETAILS

AMAZONIA



Amazonia adds a youthful touch to any room. The soft chenille with linen base and wavy pattern make it a great complement to natura collections.



Article specification

Width	140 cm
Horizontal repeat cm	Plain
Vertical repeat cm	Plain
Composition	40% CV 32% PES 16% CO 12% LI
Weight	575 gr/m ²
Thickness (mm)	

Cleaning Instructions



Use Code

Accessories

Bed Covering

Environmental Standards

FR Standards

Treatment

Mechanical Performance

Abrasion Test / Martindale Rubs (EN ISO 12947-1,2)	30.000
Piling Test (EN ISO 12945-2)	5
Colour Fastness to light (ISO 105-B02-2)	5
Colour fastness to dry rub (EN ISO 105-X12)	3-4
Colour fastness to wet rub (EN ISO 105-X1)	3
Colour fastness to wear (ISO 12947-2)	
Tearing strength (ISO 13934-1)	Warp: 100 N Weft: 179 N
Tensile Strenght (EN ISO 13934-1)	Warp: >1090 N Weft: >1090 N
Dimensional stability (EN ISO 3759)	Warp: -2.0% Weft: -1.8%
Seam slippage (ISO 13936-2)	Warp: 5.0 mm Weft: 5.0mm



Damaceno & Antunes
Rua da Alegria 387,
4475-310 Milheirós - Maia
+351229059160 info@damaceno-antunes.pt