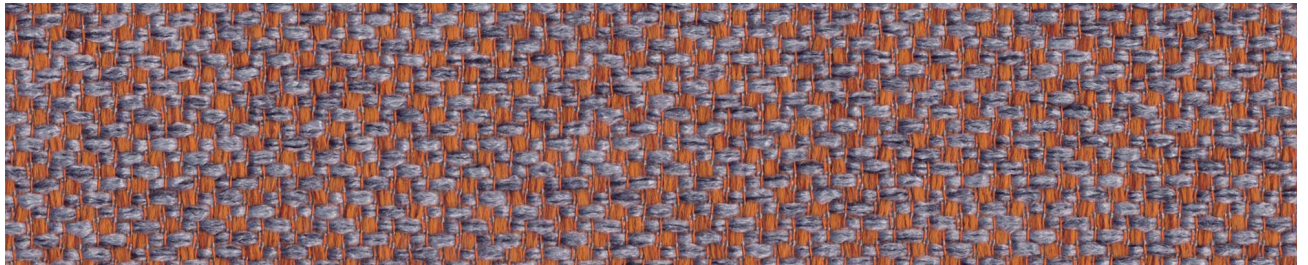


## TECHNICAL FABRIC DETAILS

# BALLY

Bally is an upholstery fabric with plenty of structure and a mix of colors.



## Article specification

Width	140 cm
Horizontal repeat cm	Plain
Vertical repeat cm	Plain
Composition	100% POL
Weight	420 gr/m <sup>2</sup>
Thickness (mm)	

## Cleaning Instructions



## Use Code

Upholstery  
Accessories

## Environmental Standards

## FR Standards

Cigarette Test- BS 5852 Scjedule 4 source 0 PART 1

## Treatment

## Mechanical Performance

Abrasion Test / Martindale Rubs (EN ISO 12947-1,2)	110.000
Piling Test (EN ISO 12945-2)	4/5
Colour Fastness to light (ISO 105-B02-2)	5
Colour fastness to dry rub ( EN ISO 105-X12)	4/5
Colour fastness to wet rub (EN ISO 105-X1)	4-5
Colour fastness to wear (ISO 12947-2)	
Tearing strength (ISO 13934-1)	
Tensile Strenght (EN ISO 13934-1)	
Dimensional stability (EN ISO 3759)	Warp: -1.0% Weft: -1.2%
Seam slippage (ISO 13936-2)	Warp: 3.5 mm Weft: 3.7mm



Damaceno & Antunes  
Rua da Alegria 387,  
4475-310 Milheirós - Maia  
+351229059160 info@damaceno-antunes.pt