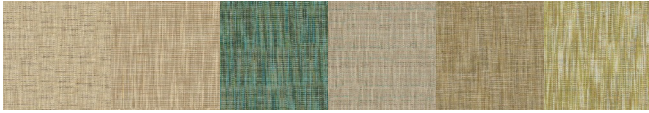


Design: Centeio



BASIC INFORMATION

Brand	Bru	Number of colour ways	6
Tariff item number	5515119000	MID	INDEHOM16
Country of origin	India	Characteristics	Texture
Vertical repeat cm	Plain	Vertical repeat inch	Plain
Horizontal repeat cm	Plain	Horizontal repeat inch	Plain
Face in	Yes	Full roll diameter cm	25
Full roll diameter inch	9.84	Average piece length m	40
Minimum for special colour m	1000	Delivery time weeks special lab dip	4

CARE AND USAGE

Care codes



Care code for bleaching

Do not bleach

Use codes

Curtains ✓
Upholstery ✓
Accessories ✓

Curtains and draperies ✓
Bed covering ✓
Maritime

Design: Centeio

FABRIC SPECIFICATIONS

Composition	87% Polyester, 13% Viscose	Average yarn number	8.83
Construction	33.07x15.75	Woven	Yes
Useable width cm	1.42	Useable width inch	55.91
Full width cm	144	Full width inch	56.69
Weight g/m ²	553	Thickness mm	0.000
Colouring type	Yarn dyed	Filament or staple	67% staple + 33% filament
Textured or non textured	67% not textured + 33% textured		

Treatment

Bio treatment	Flame retardant
Soil and stain repellent	Brushed/emersised
Backing	Anti-bacterial/microbial
Mildew resistant	Odour resistant
Stain-free technology	PFC free
Other treatment	No treatment ✓

Type of finish

Calender	Sanforized
Thermofixed	Washed
Airo ✓	Stenter

Type of print or dye

Disperse ✓	Reactive
Vat	Pigment

Weaving type

Plain	Twill
Satin	Dobby ✓
Jacquard	Pile
Other	

Design: Centeio

FABRIC TYPE

There are no technical details for this section.

ENVIRONMENTAL STANDARDS



FR STANDARDS

BS5852 source 0
FMVSS 302 Pass

Yes
Yes

CAL 117 Complies
NFPA 260

Yes
Yes

Design: Centeio

MECHANICAL PERFORMANCE

Martindale rubs	100,000	Colour fastness to light	6
Wyzenbeek double rubs	200,000	Pilling	4
Brush pilling	3-4	Wyzenbeek wire screen double rubs - residential use, stopped after 15 000 double rubs	15,000
Wyzenbeek cotton duck type heavy upholstery	Yes	Wyzenbeek wire screen heavy duty	Yes
Colour fastness to light - ISO 105-B02			
Colour fastness to light	6		
Colour fastness to water - ISO 105-E01			
Colour fastness to water	5		
Colour fastness to dry rub - ISO 105-X12			
Colour fastness dry rub	4-5		
Colour fastness to wet rub - ISO 105-X12			
Colour fastness wet rub	4-5		
Colour fastness to wear - ISO 12947-2			
Colour fastness to wear	4-5		
Tearing strength - ISO 13937-3			
Tearing strength warp N	260	Tearing strength weft N	440
Tensile strength - ISO 13934-1			
Tensile strength warp N/5cm	2000	Tensile strength weft N/5cm	1000
Elongation - ISO 13934-1			
Elongation warp %	23.5	Elongation weft %	31.5
Seam slippage - ISO 13936-2			
Seam slippage warp mm	4	Seam slippage weft mm	5
Dimensional stability (indicated in %) - ISO 3759			
Dimensional change warp	-0.10	Dimensional change warp after ironing with steam	-0.13
Dimensional change warp after ironing without steam	0.07	Dimensional change weft	0.15
Dimensional change weft after ironing with steam	0.27	Dimensional change weft after ironing without steam	0.27

Design: Centeio

WASHABILITY

Resistance to domestic washing 30° C, indicated in % - ISO 6330

Dimensional change warp	-1.10	Dimensional change warp after ironing	-1.00
Dimensional change weft	-0.37	Dimensional change weft after ironing	-0.47
Colour fastness ISO 105 C06	5		

Resistance to domestic washing 60° C, indicated in % - ISO 6330

Dimensional change warp	-2.28	Dimensional change warp after ironing	-2.05
Dimensional change weft	-0.79	Dimensional change weft after ironing	-0.80
Colour fastness ISO 105 C06	5		

Resistance to dry cleaning P, indicated in % - ISO 105 D01

Dimensional change warp	-1.13	Dimensional change warp after ironing	-0.53
Dimensional change weft	-0.46	Dimensional change weft after ironing	-0.53
Colour fastness ISO 105 D01	5		

Design: Centeio

CONSTRUCTION

Yarn 1

Warp Composition	100% Polyester	Warp Is Filament	Yes
Warp Is Not High Tenacity	Yes	Warp Is Staple	Yes
Warp Sizes	2700D	Warp Threads per cm	8.27
Warp TPM	NA		

Yarn 2

Warp Composition	100% Polyester	Warp Is Filament	Yes
Warp Is Not High Tenacity	Yes	Warp Is Textured	Yes
Warp Sizes	300D	Warp Textured	Yes
Warp Threads per cm	24.8	Warp TPM	NA

Yarn 3

Weft Composition	56% Polyester, 44% Viscose	Weft Is Filament	Yes
Weft Is Not High Tenacity	Yes	Weft Is Staple	Yes
Weft Sizes	3.5NM	Weft Threads per cm	2.6
Weft TPM	NA		

Yarn 4

Weft Composition	56% Polyester, 44% Viscose	Weft Is Filament	Yes
Weft Is Not High Tenacity	Yes	Weft Is Staple	Yes
Weft Sizes	3.5NM	Weft Threads per cm	2.64
Weft TPM	NA		

Yarn 5

Weft Composition	100% Polyester	Weft Is Filament	Yes
Weft Is Not High Tenacity	Yes	Weft Is Textured	Yes
Weft Sizes	300D	Weft Textured	Yes
Weft Threads per cm	10.51	Weft TPM	NA