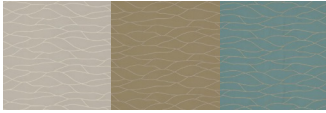


## Design: Despacito



### BASIC INFORMATION

Number of colour ways	3	Tariff item number	5407530000
MID	INDEEXP16	Country of origin	India
Characteristics	Jacquard	Vertical repeat cm	24.80
Vertical repeat inch	9.76	Horizontal repeat cm	126.50
Horizontal repeat inch	49.80	Double folded face in	Yes
Full roll diameter cm	24.3	Full roll diameter inch	9.57
Average piece length m	40	Minimum for special colour m	1000
Delivery time weeks special lab dip	4	Railroaded	Yes

### CARE AND USAGE

#### Care codes



Care code for bleaching

Do not bleach

#### Use codes

Curtains ✓  
Upholstery  
Accessories ✓

Curtains and draperies ✓  
Bed covering  
Maritime

Design: Despacito

FABRIC SPECIFICATIONS

Composition	100% Polyester	Average yarn number	59.11
Construction	107x39	Woven	Yes
Useable width cm	2.98	Useable width inch	117.32
Full width cm	300	Full width inch	118.11
Weight g/m <sup>2</sup>	247	Thickness mm	0.543
Colouring type	Yarn dyed	Filament or staple	100% filament
Textured or non textured	100% textured		

Treatment

---

Bio treatment	Flame retardant
Soil and stain repellent	Brushed/emersised
Backing	Anti-bacterial/microbial
Mildew resistant	Odour resistant
Stain-free technology	PFC free
Other treatment	No treatment ✓

Type of finish

---

Calender	Sanforized
Thermofixed	Washed
Airo	Stenter ✓

Type of print or dye

---

Disperse ✓	Reactive ✓
Vat	Pigment

Weaving type

---

Plain	Twill
Satin	Dobby
Jacquard ✓	Pile
Other	

Design: Despacito

### FABRIC TYPE

There are no technical details for this section.

### ENVIRONMENTAL STANDARDS



### FR STANDARDS

BS5867 part 2 type B	No	CAL 117 Complies	Yes
CANULC-S109 Large flame test	Yes	CANULC-S109 Small flame test	Yes
FMVSS 302 Pass	Yes	NFPA 260	Yes
NFPA 701	Yes		

Design: Despacito

**MECHANICAL PERFORMANCE**

Martindale rubs	4,000	Colour fastness to light	4-5
Wyzenbeek double rubs	35,000	Pilling	4-5
Brush pilling	5	Wyzenbeek wire screen double rubs - residential use, stopped after 15 000 double rubs	15,000
Wyzenbeek cotton duck type heavy upholstery	Yes	Wyzenbeek wire screen medium duty	Yes
<b>Colour fastness to light - ISO 105-B02</b>			
Colour fastness to light	4-5		
<b>Colour fastness to water - ISO 105-E01</b>			
Colour fastness to water	5		
<b>Colour fastness to dry rub - ISO 105-X12</b>			
Colour fastness dry rub	4-5		
<b>Colour fastness to wet rub - ISO 105-X12</b>			
Colour fastness wet rub	4-5		
<b>Colour fastness to wear - ISO 12947-2</b>			
Colour fastness to wear	4-5		
<b>Tearing strength - ISO 13937-3</b>			
Tearing strength warp N	110	Tearing strength weft N	46
<b>Tensile strength - ISO 13934-1</b>			
Tensile strength warp N/5cm	1200	Tensile strength weft N/5cm	1800
<b>Elongation - ISO 13934-1</b>			
Elongation warp %	41	Elongation weft %	41.5
<b>Seam slippage - ISO 13936-2</b>			
Seam slippage warp mm	3	Seam slippage weft mm	3
<b>Dimensional stability (indicated in %) - ISO 3759</b>			
Dimensional change warp	0.02	Dimensional change warp after ironing with steam	-0.27
Dimensional change warp after ironing without steam	0.00	Dimensional change weft	-0.31
Dimensional change weft after ironing with steam	-0.53	Dimensional change weft after ironing without steam	0.13

Design: Despacito

**WASHABILITY**

**Resistance to domestic washing 30° C, indicated in % - ISO 6330**

Dimensional change warp	-0.43	Dimensional change warp after ironing	-0.40
Dimensional change weft	-0.43	Dimensional change weft after ironing	-0.27
Colour fastness ISO 105 C06	4-5		

**Resistance to domestic washing 60° C, indicated in % - ISO 6330**

Dimensional change warp	-1.89	Dimensional change warp after ironing	-1.72
Dimensional change weft	-3.12	Dimensional change weft after ironing	-2.99
Colour fastness ISO 105 C06	4-5		

**Resistance to dry cleaning P, indicated in % - ISO 105 D01**

Dimensional change warp	-1.16	Dimensional change warp after ironing	-1.13
Dimensional change weft	-1.36	Dimensional change weft after ironing	-1.13
Colour fastness ISO 105 D01	4-5		

Design: Despacito

**CONSTRUCTION**

**Yarn 1**

Warp Composition	100% Polyester	Warp Is Filament	Yes
Warp Is Not High Tenacity	Yes	Warp Is Textured	Yes
Warp Sizes	65D	Warp Textured	Yes
Warp Threads per cm	107	Warp TPM	500

**Yarn 2**

Weft Composition	100% Polyester	Weft Is Filament	Yes
Weft Is Not High Tenacity	Yes	Weft Is Textured	Yes
Weft Sizes	220D	Weft Textured	Yes
Weft Threads per cm	4.3	Weft TPM	NA

**Yarn 3**

Weft Composition	100% Polyester	Weft Is Filament	Yes
Weft Is Not High Tenacity	Yes	Weft Is Textured	Yes
Weft Sizes	300D	Weft Textured	Yes
Weft Threads per cm	8.7	Weft TPM	580

**Yarn 4**

Weft Composition	100% Polyester	Weft Is Filament	Yes
Weft Is Not High Tenacity	Yes	Weft Is Textured	Yes
Weft Sizes	300D	Weft Textured	Yes
Weft Threads per cm	26	Weft TPM	NA

**DOWNLOADS / CERTIFICATES**

There are no technical details for this section.