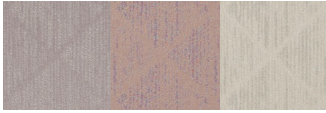


Design: RETRATO



BASIC INFORMATION

| | | | |
|------------------------------|------------|-------------------------------------|------------|
| Tariff item number | 5801370000 | Number of colour ways | 4 |
| Country of origin | India | MID | INDDEHOM16 |
| Vertical repeat cm | 17.50 | Characteristics | Velvet |
| Horizontal repeat cm | 17.70 | Vertical repeat inch | 6.89 |
| Face in | Yes | Horizontal repeat inch | 6.97 |
| Full roll diameter inch | 12.6 | Full roll diameter cm | 32 |
| Minimum for special colour m | 1000 | Average piece length m | 30 |
| | | Delivery time weeks special lab dip | 4 |

CARE AND USAGE

Care code comments iron on reverse side

Care codes

Care code for washing °C Do not wash Care code for bleaching Do not bleach



Use codes

Curtains
Upholstery ✓
Accessories ✓

Curtains and draperies
Bed covering ✓
Maritime

Design: RETRATO

FABRIC SPECIFICATIONS

| | | | |
|--------------------------|---------------------------------|---------------------|---------------------------|
| Composition | 61% Polyester, 39% Viscose | Average yarn number | 13.72 |
| Construction | 31.89x23.6 | Woven | Yes |
| Useable width cm | 1.42 | Useable width inch | 55.91 |
| Full width cm | 144 | Full width inch | 56.69 |
| Weight g/m ² | 556 | Thickness mm | 1.880 |
| Colouring type | Yarn dyed | Filament or staple | 27% staple + 73% filament |
| Textured or non textured | 27% not textured + 73% textured | | |

Treatment

| | |
|--------------------------|--------------------------|
| Bio treatment | Flame retardant |
| Soil and stain repellent | Brushed/emersed |
| Backing | Anti-bacterial/microbial |
| Mildew resistant | Odour resistant |
| Stain-free technology | PFC free |
| Other treatment | No treatment ✓ |

Type of finish

| | |
|-------------|------------|
| Calender | Sanforized |
| Thermofixed | Washed |
| Airo ✓ | Stenter |

Type of print or dye

| | |
|------------|------------|
| Disperse ✓ | Reactive ✓ |
| Vat | Pigment |

Weaving type

| | |
|------------|-------|
| Plain | Twill |
| Satin | Dobby |
| Jacquard ✓ | Pile |
| Other | |

Design: RETRATO

FABRIC TYPE

There are no technical details for this section.

ENVIRONMENTAL STANDARDS



Prop 65

Yes

FR STANDARDS

BS5852 source 0
FMVSS 302 Pass

Yes
Yes

CAL 117 Complies
NFPA 260

Yes
Yes

Design: RETRATO

MECHANICAL PERFORMANCE

| | | | |
|----------------------------------------------------------|--------|---------------------------------------------------------------------------------------|--------|
| Martindale rubs | 30,000 | Colour fastness to light | 7 |
| Wyzenbeek double rubs | 85,000 | Pilling | 4 |
| Brush pilling | 4 | Wyzenbeek wire screen double rubs - residential use, stopped after 15 000 double rubs | 15,000 |
| Wyzenbeek cotton duck type heavy upholstery | Yes | Wyzenbeek wire screen heavy duty | Yes |
| Colour fastness to light - ISO 105-B02 | | | |
| Colour fastness to light | 7 | | |
| Colour fastness to water - ISO 105-E01 | | | |
| Colour fastness to water | 4-5 | | |
| Colour fastness to dry rub - ISO 105-X12 | | | |
| Colour fastness dry rub | 4-5 | | |
| Colour fastness to wet rub - ISO 105-X12 | | | |
| Colour fastness wet rub | 4-5 | | |
| Colour fastness to wear - ISO 12947-2 | | | |
| Colour fastness to wear | 4 | | |
| Tearing strength - ISO 13937-3 | | | |
| Tearing strength warp N | 290 | Tearing strength weft N | 68 |
| Tensile strength - ISO 13934-1 | | | |
| Tensile strength warp N/5cm | 980 | Tensile strength weft N/5cm | 2000 |
| Elongation - ISO 13934-1 | | | |
| Elongation warp % | 37 | Elongation weft % | 30.5 |
| Seam slippage - ISO 13936-2 | | | |
| Seam slippage warp mm | 2 | Seam slippage weft mm | 2 |
| Dimensional stability (indicated in %) - ISO 3759 | | | |
| Dimensional change warp | -0.10 | Dimensional change warp after ironing with steam | -0.20 |
| Dimensional change warp after ironing without steam | 0.07 | Dimensional change weft | -0.15 |
| Dimensional change weft after ironing with steam | 0.00 | Dimensional change weft after ironing without steam | 0.07 |

Design: RETRATO

WASHABILITY

Resistance to domestic washing 30° C, indicated in % - ISO 6330

| | | | |
|-----------------------------|-------|---------------------------------------|-------|
| Dimensional change warp | -0.69 | Dimensional change warp after ironing | -0.92 |
| Dimensional change weft | -0.46 | Dimensional change weft after ironing | -0.46 |
| Colour fastness ISO 105 C06 | 4 | | |

Resistance to domestic washing 60° C, indicated in % - ISO 6330

| | | | |
|-----------------------------|-------|---------------------------------------|-------|
| Dimensional change warp | -1.72 | Dimensional change warp after ironing | -1.46 |
| Dimensional change weft | -1.12 | Dimensional change weft after ironing | -1.06 |
| Colour fastness ISO 105 C06 | 4-5 | | |

Resistance to dry cleaning P, indicated in % - ISO 105 D01

| | | | |
|-----------------------------|-------|---------------------------------------|-------|
| Dimensional change warp | -0.99 | Dimensional change warp after ironing | -0.86 |
| Dimensional change weft | -0.96 | Dimensional change weft after ironing | -0.86 |
| Colour fastness ISO 105 D01 | 4-5 | | |

Design: RETRATO

CONSTRUCTION

Yarn 1

| | | | |
|---------------------------|----------------|------------------|-----|
| Warp Composition | 100% Polyester | Warp Is Filament | Yes |
| Warp Is Not High Tenacity | Yes | Warp Is Textured | Yes |
| Warp Sizes | 155/34/450 | Warp Textured | Yes |
| Warp Threads per cm | 31.89 | Warp TPM | 0 |

Yarn 2

| | | | |
|---------------------------|----------------|------------------|-----|
| Weft Composition | 100% Polyester | Weft Is Filament | Yes |
| Weft Is Not High Tenacity | Yes | Weft Is Textured | Yes |
| Weft Sizes | 300D/96 | Weft Textured | Yes |
| Weft Threads per cm | 9.44 | Weft TPM | 0 |

Yarn 3

| | | | |
|---------------------------|----------------|------------------|-----|
| Weft Composition | 100% Polyester | Weft Is Filament | Yes |
| Weft Is Not High Tenacity | Yes | Weft Is Textured | Yes |
| Weft Sizes | 300D/96 | Weft Textured | Yes |
| Weft Threads per cm | 9.44 | Weft TPM | 0 |

Yarn 4

| | | | |
|---------------------------|----------------|------------------|-----|
| Weft Composition | 100% Polyester | Weft Is Filament | Yes |
| Weft Is Not High Tenacity | Yes | Weft Is Textured | Yes |
| Weft Sizes | 3NM | Weft Textured | Yes |
| Weft Threads per cm | 4.72 | Weft TPM | 0 |

Yarn 5

| | | | |
|---------------------------|--------------|---------------------|-------|
| Pile Composition | 100% Viscose | Pile Is Filament | Yes |
| Pile Is Not High Tenacity | Yes | Pile Is Staple | Yes |
| Pile Sizes | 2/24s | Pile Threads per cm | 10.39 |
| Pile TPM | 0 | | |

Yarn 6

| | | | |
|---------------------|--------------|---------------------------|-------|
| Pile Composition | 100% Viscose | Pile Is Not High Tenacity | Yes |
| Pile Is Staple | Yes | Pile Sizes | 2/24s |
| Pile Threads per cm | 10.39 | Pile TPM | 0 |

Design: RETRATO

DOWNLOADS / CERTIFICATES

There are no technical details for this section.